



**Presentation
of
9-Innwua Group Co., Ltd.
and
Southern Metal Industry Co., Ltd.**



Company Introduction

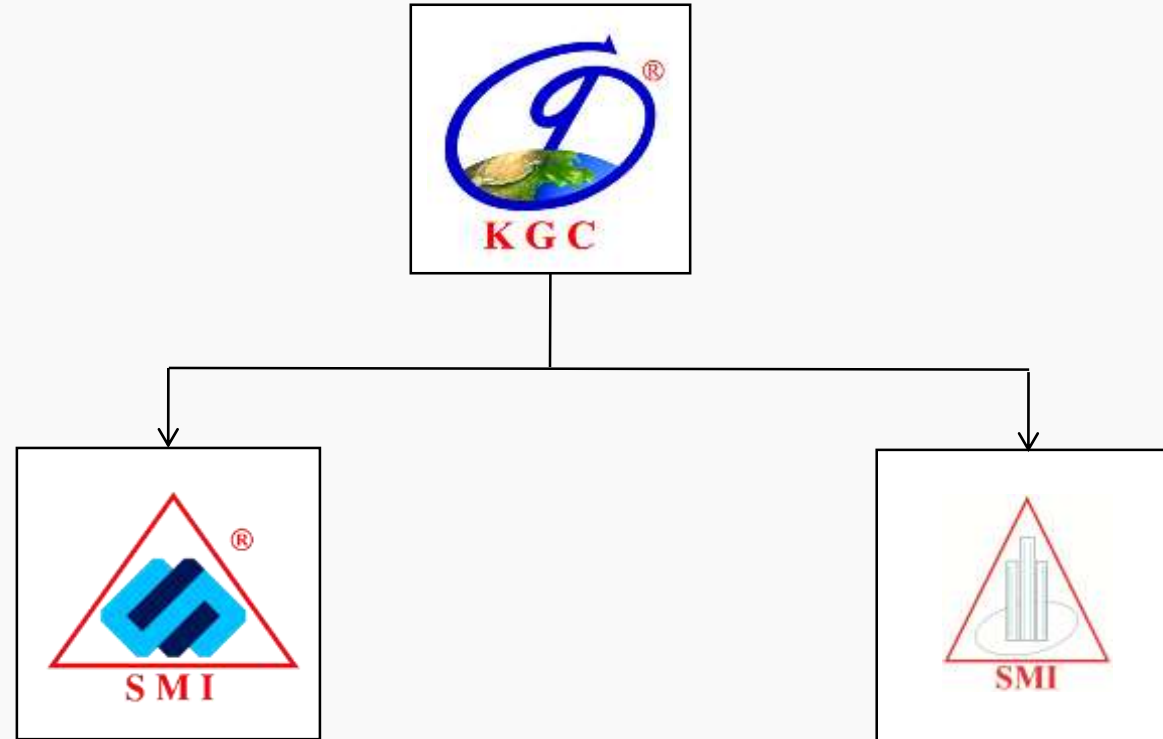


Presentation Programs

- 9-Innwua Group Co., Ltd.
- Southern Metal Industry (SMI) Co., Ltd
- Toener Investment Group Co., Ltd.
- SMI Real Estate Development Co., Ltd.
- Southern Union Steel International Co., Ltd.
- DeChun Steel Structure Engineering Co., Ltd.
- HengRui Integrated Technology Investment Co., Ltd
- China Railway BaoJi Bridge Group Co., Ltd.
- Shinohydro Bureau 14 Co., Ltd.
- China Railway 20th Bureau Group Co., Ltd.
- Future Missions



9-INNWUA GROUP CO., LTD.



- In-Corporated in 2016



Company Background

- Established in 1996
- Largest steel products fabrication and provider
- Top Leading steel structure construction company
- With two large manufacturing & fabrication factories - 9,810 m²
- 14,173 m²
- Achieved ISO 9001:2008 (Quality Management)





Southern Metal Industry Co., Ltd.

All Kind Steel Structure Manufacturing, Construction and PEB Engineering.

Fabrication Process





Southern Metal Industry Co., Ltd.

All Kind Steel Structure Manufacturing, Construction and PEB Engineering.

Fabrication Process (box-beam)





Southern Metal Industry Co., Ltd.

All Kind Steel Structure Manufacturing, Construction and PEB Engineering.



Electro-slag Welding
Machine



Box Beam Drilling
Machine



Plate Bending
Machine



H-Beam Bending
Machine



Sub-Arc Welding
Machine



Hydraulic
Straightening



CNC Plasma Cutter



Face End Milling
Machine



Southern Metal Industry Co., Ltd.

All Kind Steel Structure Manufacturing, Construction and PEB Engineering.



Decking Sheet
Machine



CNC Flame Cutter



Roofing Machine



H-Beam Assemble
Machine



CNC Pipe Cutting
Machine



CNC Gantry Type
Drilling Machine



C-Purlin Machine



CNC Drilling Machine



Southern Metal Industry Co., Ltd.

All Kind Steel Structure Manufacturing, Construction and PEB Engineering.



Roof Bending
Machine



Hydraulic Press
Cutting Machine



CNC Mini Cutter



Radial Type Drilling
Machine



Roof Sheet Cutting
and Folding Machine



Flange Straightening
Machine

SMI Completed Projects

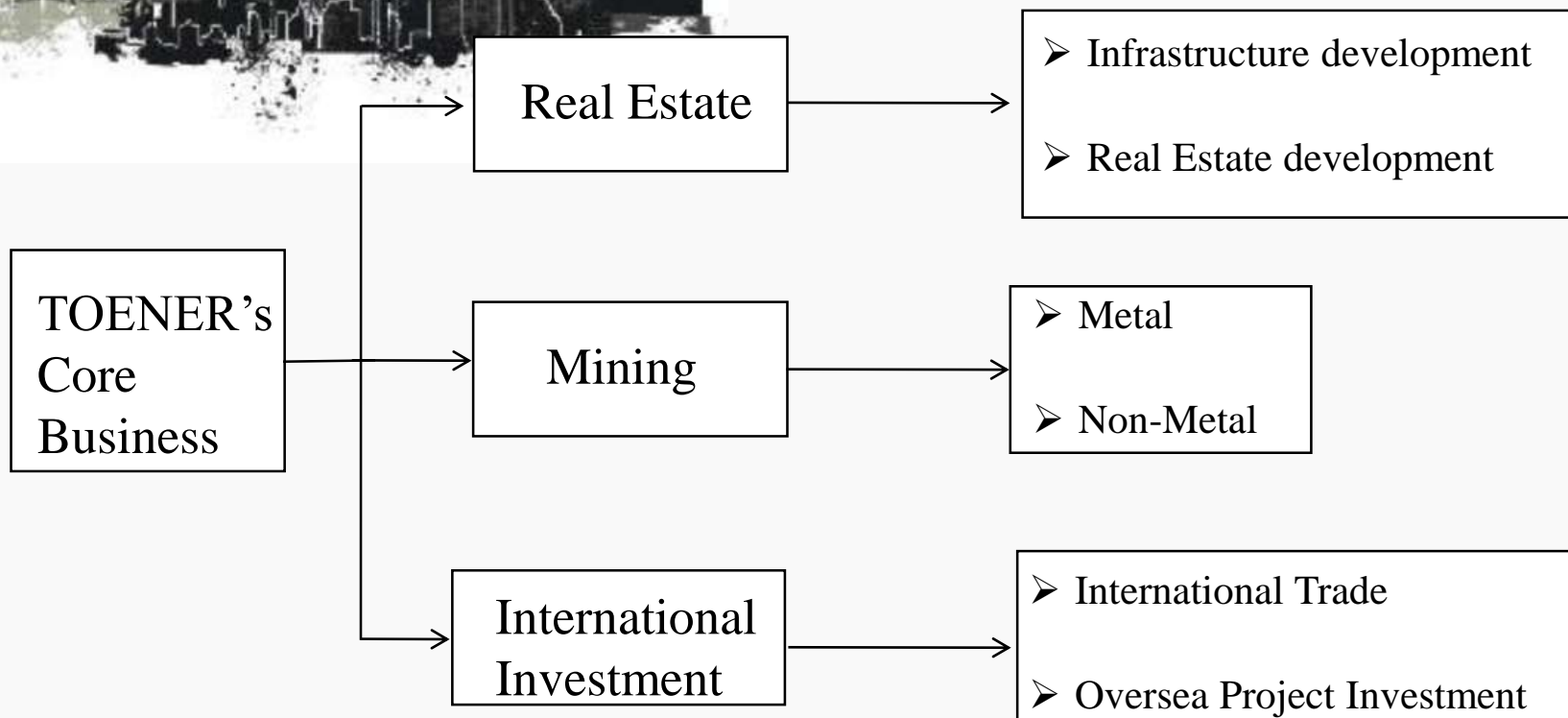
- Pang Pet / Steel Mill / (Shan State)
- Mingalar Mon / Market / (Yangon Region)
- Hon Chuan Myanmar / Garment / (Yangon Region)
- Max Myanmar / Cement Silo / (Naypyitaw Region)





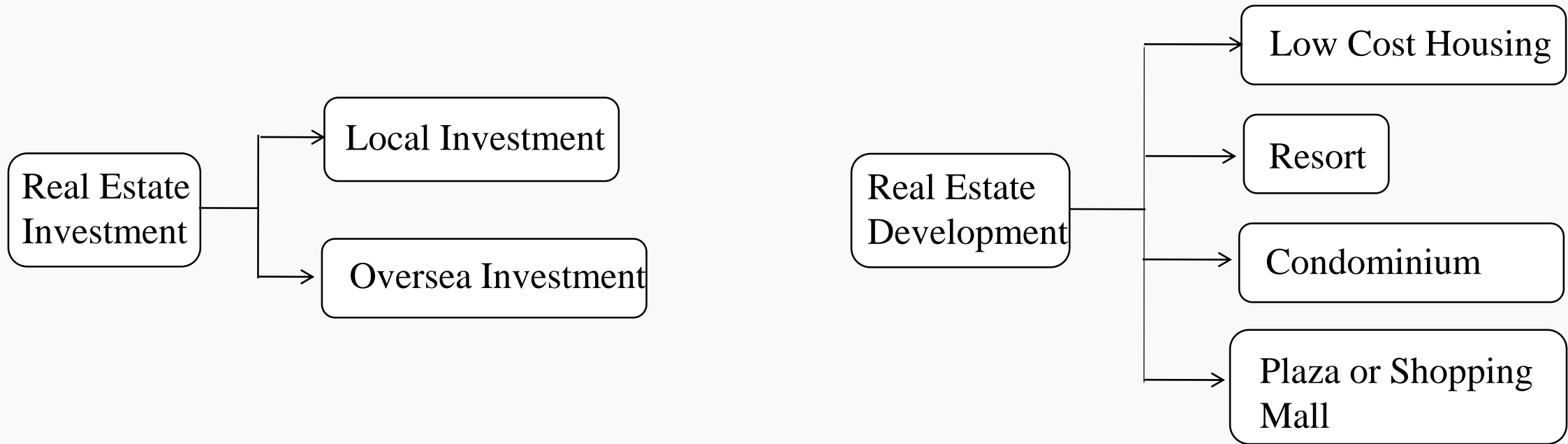
Toener Investment Group Co., Ltd.

- Modern international comprehensive investment group
- Business distribute – Hunan (core), Sichuan, Yunan etc. and oversea country



Real Estate Development

- Established in 2008 by rebuild process of earth quaked SiChun infrastructure.
- Established first property development project in Shenzhen, China. (2010)
- Afterward further real estate development project in local and oversea countries such as (Singapore, Malaysia, Indonesia and Myanmar)
- Achieved years of experience in term of financial efficiency, resources and technologies



Real Estate Development - II

• Dujangyan Wealth Plaza (SiChuan)



• ShiMu Island Housing (Xindu)



• Fuqing Residential (ShenZhen)



• Santa Fe Sunshine Project (ShenZhen)



• Commercial Culture Square (ZhangJiaJae) • Silver Beach Resort (ShenZhen)





SMI Real Estate Development Co.,Ltd.

- Joint Venture Real Estate Development Company

➤ TOENER International Investment Group + Southern Metal Industry Co., Ltd.

• River Front Garden Condominium Project

➤ Location - between Aung Zaya and Bayint Naung Bridges

➤ Project Area – 40,468.56 m²

➤ Facilities – Cinema, Restaurant, Entertainment & Gym, Shopping Mall



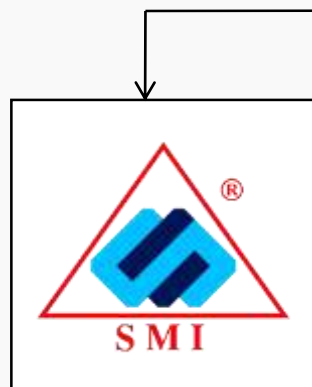
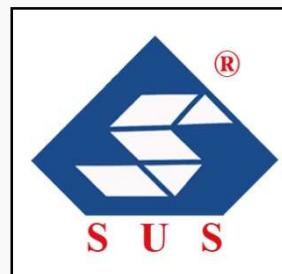
Other J.V Projects

Development			
Project Name	Location	Project Type	Area (Acres)
Kyauktagar Industrial Park Co., Ltd.	Bago Region	Residential + Industrial	205
Maubin Industrial Park Co., Ltd.	Delta Region	Residential + Industrial	249
New Vantage Development Co., Ltd.	Yangon Region	Real Estate	64
Royal Lotus Park Real Estate Development Co., Ltd.	Yangon Region	Real Estate	42
Royal Pyramid Leadership Holding Co., Ltd	Yangon Region	Real Estate	50

Manufacturing			
Project Name	Location	Project Type	Area (Acres)
Dong Htun Zinc Steel Industrial Co., Ltd	Yangon Region	Polymer Coating	2



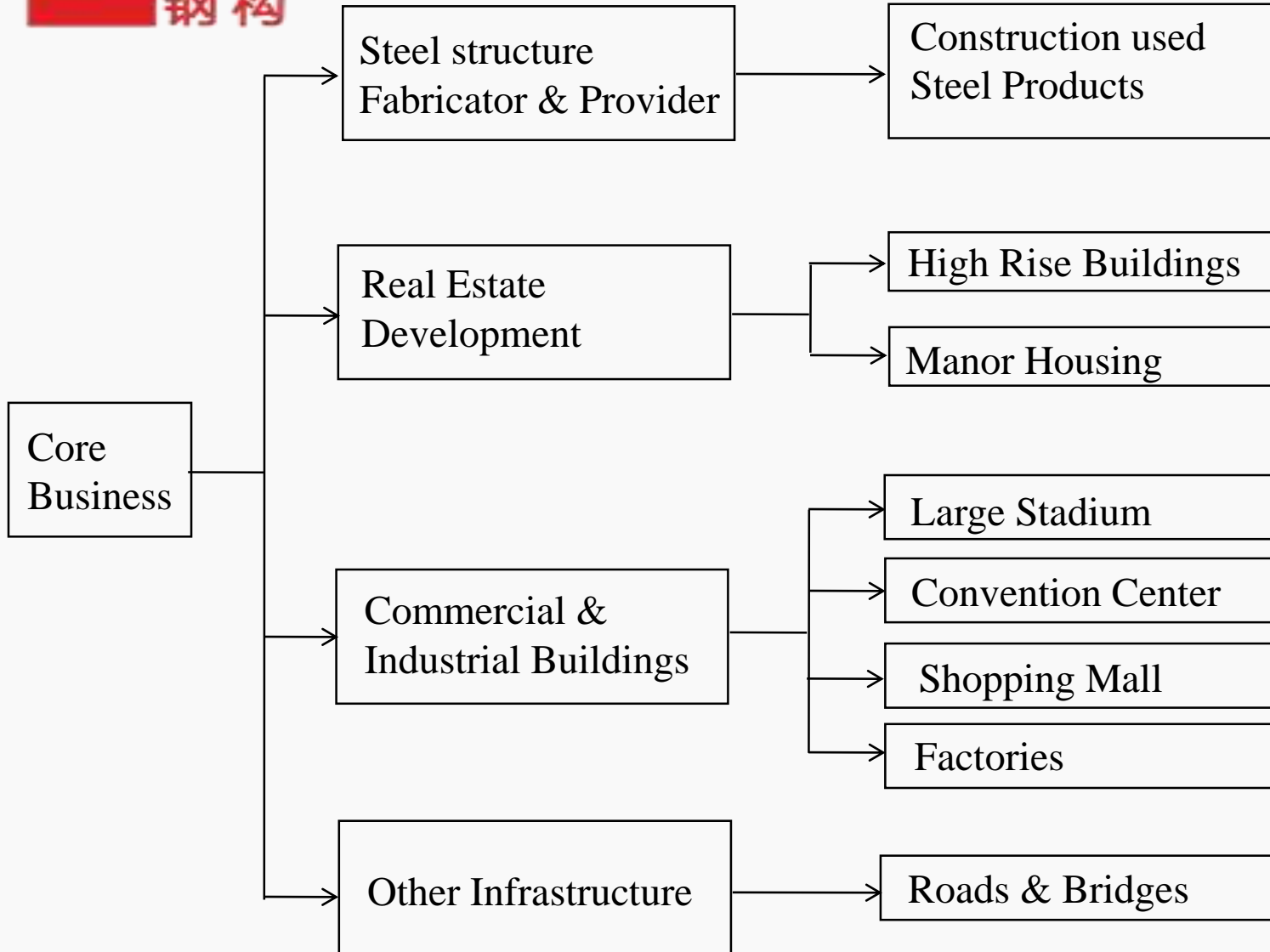
Southern Union Steel International Co., Ltd.



- In-Corporated in 2016
- Joint Venture between
 - Southern Metal Industry Co., Ltd.
 - Hengrui Integrated Technology Investment Co., Ltd.
 - Sinohydro Bureau 14 Co., Ltd.
 - China Railway 20th Bureau Group Co., Ltd.
 - China Railway BaoJi Bridge Group Co., Ltd.



Dechun Steel Structure Engineering Co., Ltd.



- Established in 2004
- Head office in Kunming Yunnan
- Factory area : 34 Acres

Factory Vision - I

- Steel Plate Un-Coiling Production Line



Coiled M.S Steel

Un-Coiling

M.S Steel Plate



Factory Vision - II



Local and Oversea Projects



AB InBev (Kunming) beer Factory



MasterKang Factory



Pearl Sugar Factory In Mandalay

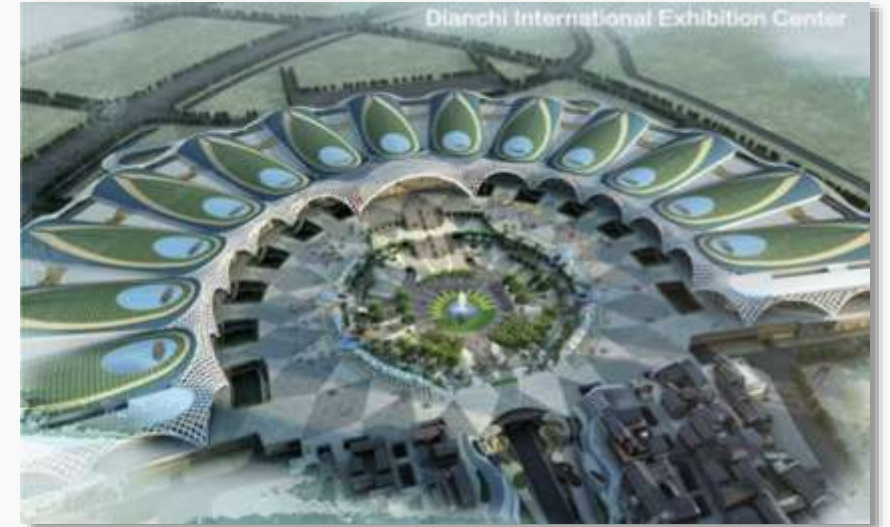


Rubber Factory in Laos

Stadium and Commercial Projects



Dian-Kingdom Dock



DianChi International Exhibition Center



Shopping center



Hospital



Business center

High-Rise Commercial Projects



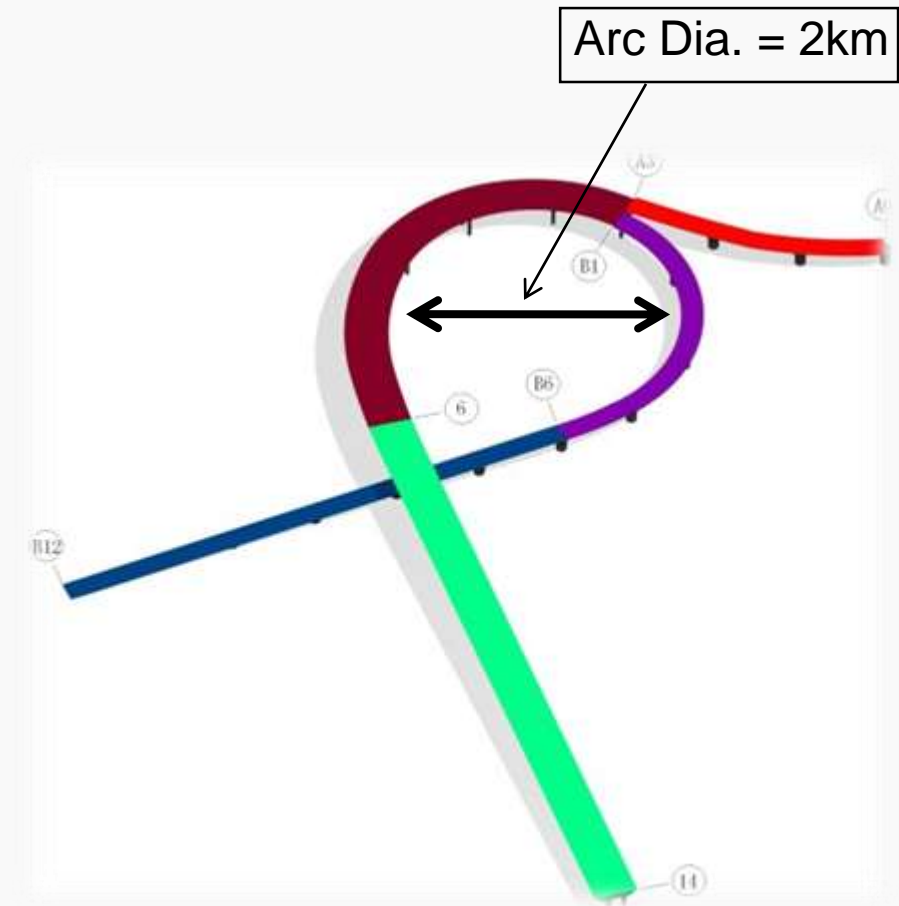
Kunming Wanda Plaza



Kunming Juheqitai City

Bridge Projects – I (Xing Long Gang Bridge)

- Design as continuous steel box beam
- Total length 1.2 km, width 16.5 m
- Worth of 350 million Yuan



Bridge Projects – II

NangChang Pedestrian Bridge

- Located in NangChang DownTown, China
- Hexagonal Shape Bridge



Long Jiang Bridge

- Located in Boshan, Yunan, China
- One of longest and highest suspension bridge
- Connect of Baoshan - Tengchong and straight to Myanmar



HengRui Integrated Technology Investment Co., Ltd.



Myanmar Investment



- Established in 2015
- Located in Mingalardon, Yangon, Myanmar
- Core Business (Investment and Construction)

PROJECTS IN MYANMAR

Yangon KanTharYar Centre Project

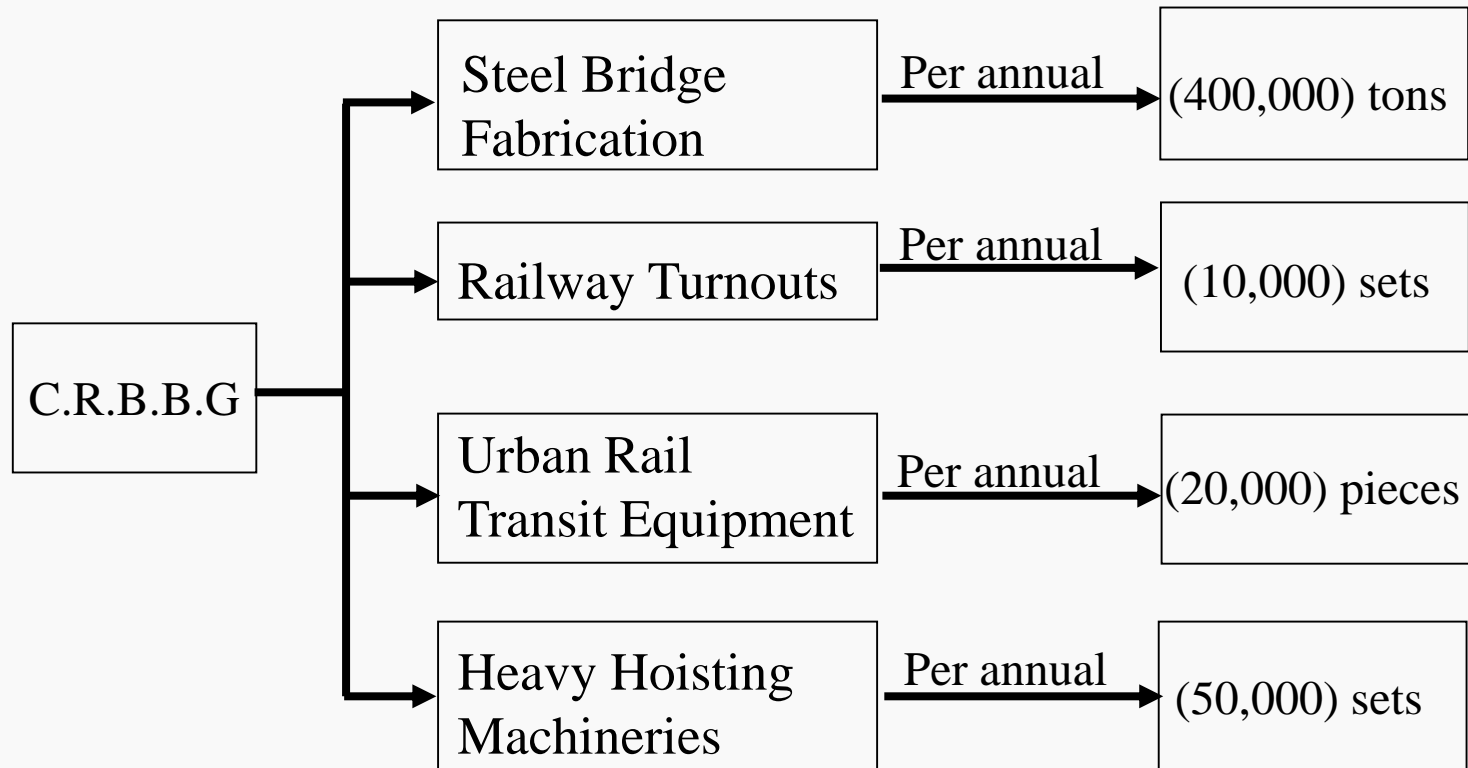
- Two High-Rise Steel Structure Building (25 floors)
- Two basements parking area
- Commercial center
- Hotel – 5 stars



China Railway Baoji Bridge Group Co., Ltd.



- Established in 1966
- Largest state-owned steel bridge fabricator.
- Owned total assets of RMB (6) billions yuan



Factory Layout



C.R.B.B.G 's YangZhou Steel Factory

- Build in 2007 in YangZhou City, China
- Massive Steel Structure production factory

Factory Occupied
Area (700,000) m²

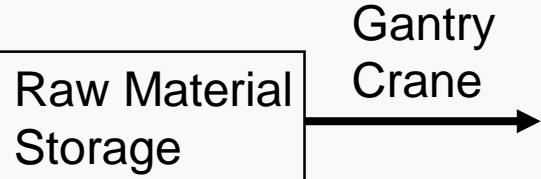
Tianyuan Industrial
Development Co.,Ltd.
(130,000) m²

BaoJi Qiaoyuan
Industrial and Trade
(110,000) m²

Shantou Steel
Structure Subsidiary
(180,000) m²

YangZhou Steel
Structure Subsidiary
(467,000) m²

Manufacturing Process Flow - I

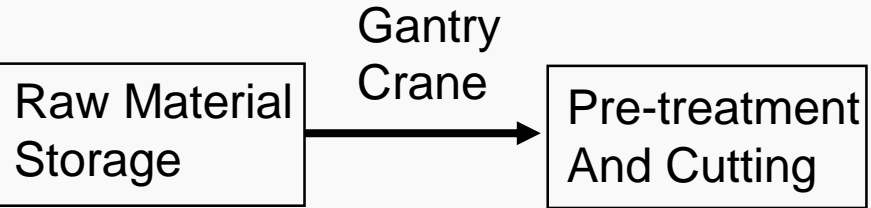


Raw Material Storage Area

- Storage Area 15,000 m²
- Can Store up to 60,000 tons of steel



Manufacturing Process Flow - II

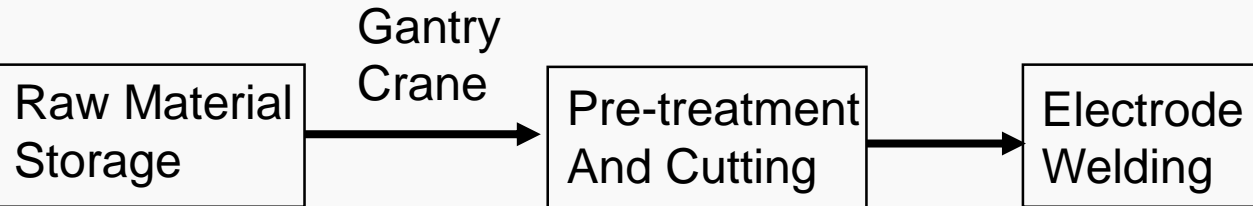


Pre-Treatment And Cutting

- 3 Production Lines
- Production Area 13,000 m²
- Production Capacity 15,000 tons/month



Manufacturing Process Flow - III

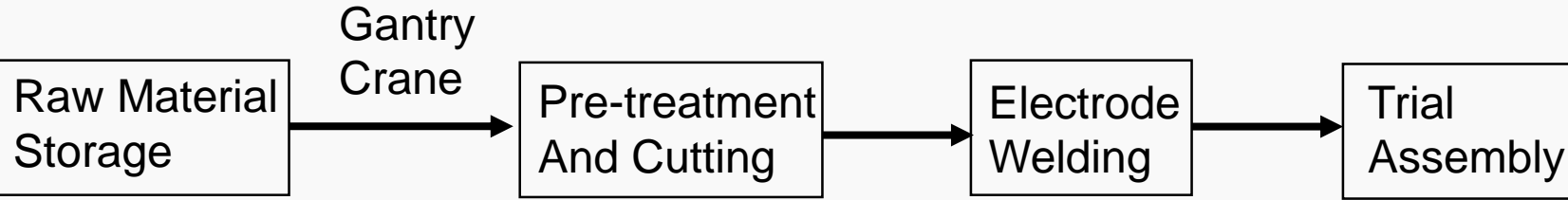


Multi-Electrode Welding And Inspection

- Manufacturing Area 30,000 m²



Manufacturing Process Flow - IV

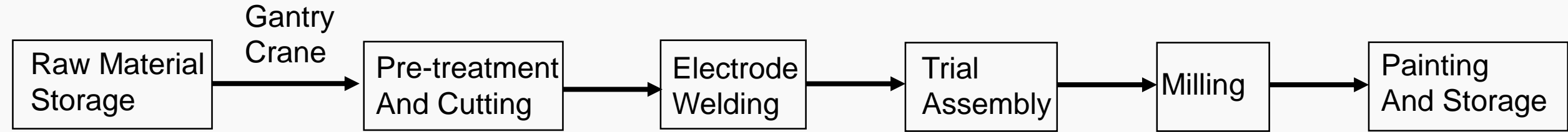


Trial Assembly

- One Production for Steel Girder
- One Production for Steel Tower



Manufacturing Process Flow - V

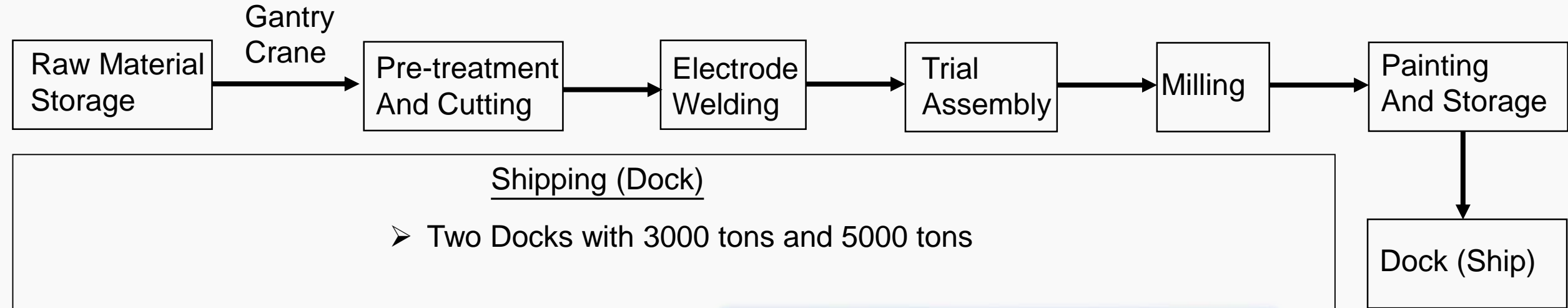


Milling, Painting and Storage

- Milling Workshop Area 8500 m²
- Painting Workshop Area 6900 m²
- 200,000 m² Storage Area



Manufacturing Process Flow - VI



Bridge Projects – I (Truss Bridges)

- In China Mainland Projects



➤ WuHu Yangtze River Bridge



➤ ZhengZhou Yellow River Bridge



➤ SunKou Yellow River Bridge

- Local Projects



➤ Nyaungdon Bridge (Myanmar)



➤ Thanlwin Bridge (Myanmar)



➤ Thanlyin Bridge (Myanmar)

Bridge Projects - II (Steel Truss Arch Bridges)

➤ NanJing DaShengGuan Yangtze River Bridge



➤ NingBou WanTou Bridge



➤ XiaMen WuYuan Bridge



➤ GuangXi LouZhou WeiYi Bridge



➤ ChongQiang ChaoTianMen Bridge



Bridge Projects - III (Steel Box Girder Cable-Stayed)

➤ AnQing Yangtze River High-Way Bridge



➤ ZhouShan TiaoTianMen Bridge



➤ NanJing 2nd Yangtze River Bridge



➤ ShanTou QueShi Bay Bridge



Bridge Projects - IV (Steel Box Girder Suspension)

➤ ZhouShan XiHouMen Bridge



➤ GuangZhou Pearl River HuangPu Bridge



➤ TaiZhou Yangtze River High-Way Bridge



➤ NanJing 4th Yangtze River Bridge



Steel Tower Projects

- NanJing 3rd Yangtze River Bridge (Steel Tower)



- MaAn Shan Yangtze River High-Way Bridge

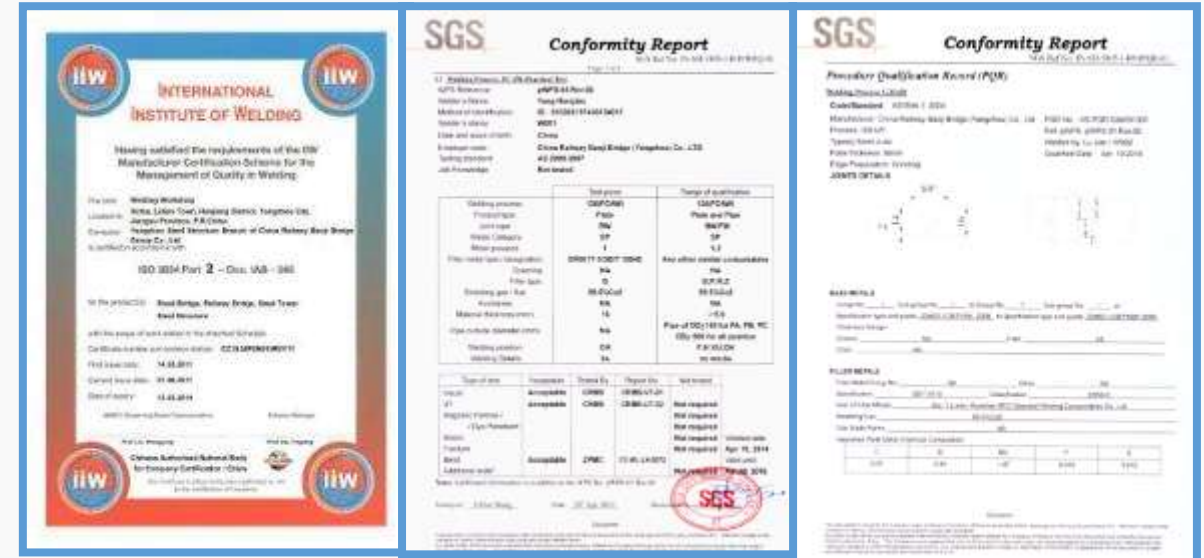


- Steel Tower Segments



Company Qualification and Certificates - I

- ISO9001/ISO14001/OHSAS18001 Certificate
- ISO 3834/SGS Certificate



➤ **EN1090/UKAS Certificates**



Company Qualification and Certificates - III

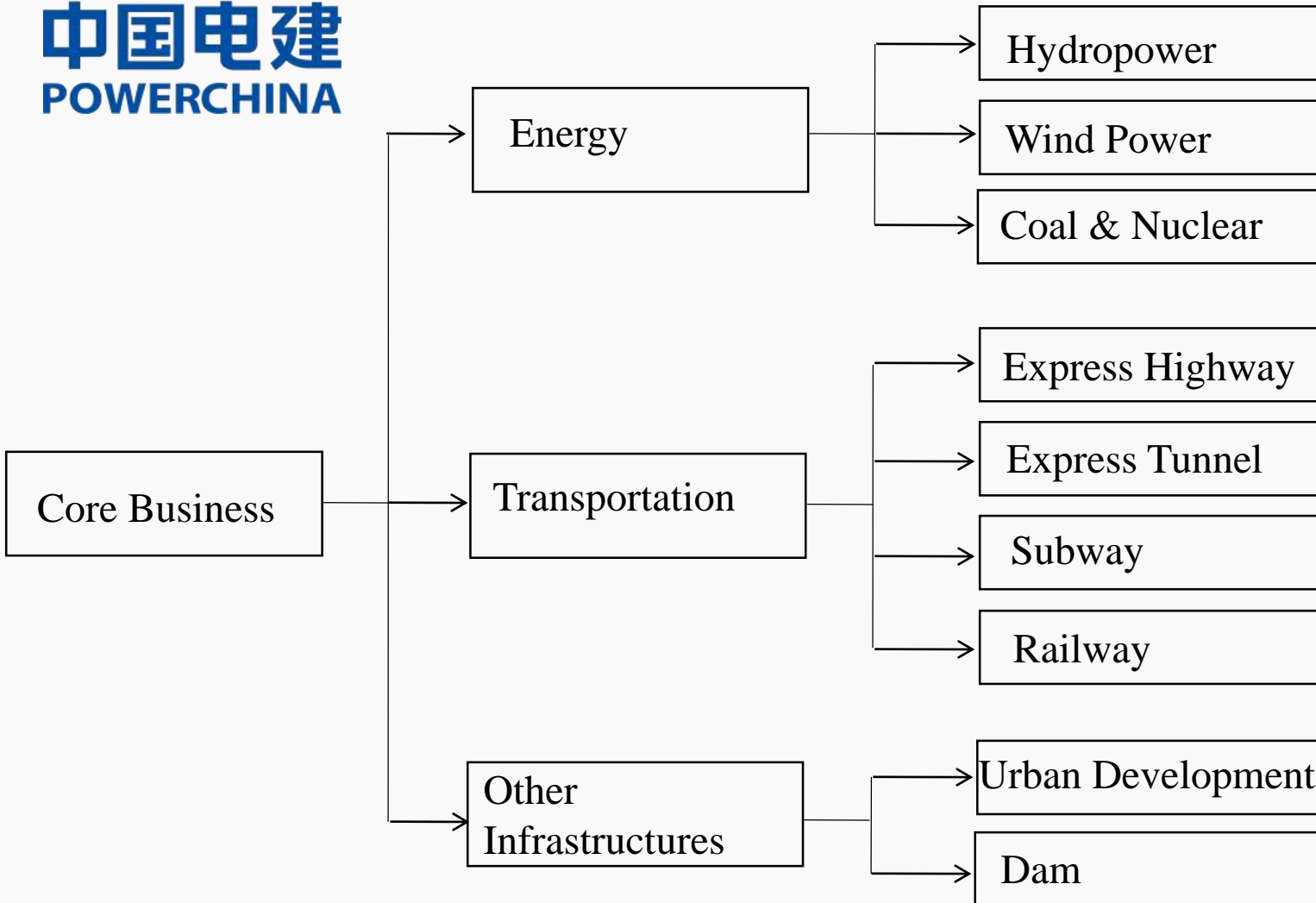
➤ AISC Certificate





Sinohydro Bureau 14 Co., Ltd.

中国电建
POWERCHINA



- Established in 1954
- Subsidiary of Power Construction Corporation of Chinese Government
- Located in Kunming, Yunnan, China
- Earliest explorer reforms of hydropower construction in China



Underground Powerhouse Hydropower Projects

•Three Gorges Project / Yangtze River



•Nuozhadu Hydropower / Yunnan



•Huangdeng Hydropower/ Yunnan



•Longtan Hydropower / Guangxi



•Xiluodu Hydropower / Jinsha River

Dam Projects

- Three Gorges Dam/ Hubei



- Kuaizehe Dam / Yunnan



- Lubuge Rock fill Dam / Yunnan



Other Electricity Power Plant Projects

- Honghe Kaiyuan Coal Electricity Plant / Yunan



- Zhemoshan Wind Power Plant / Dali



- Lufeng Nuclear Power Plant / GuangDong



Express High Way Projects

•Wuyishan Expressway / Fujian



•Kaili – Leishan Expressway / Guizhou

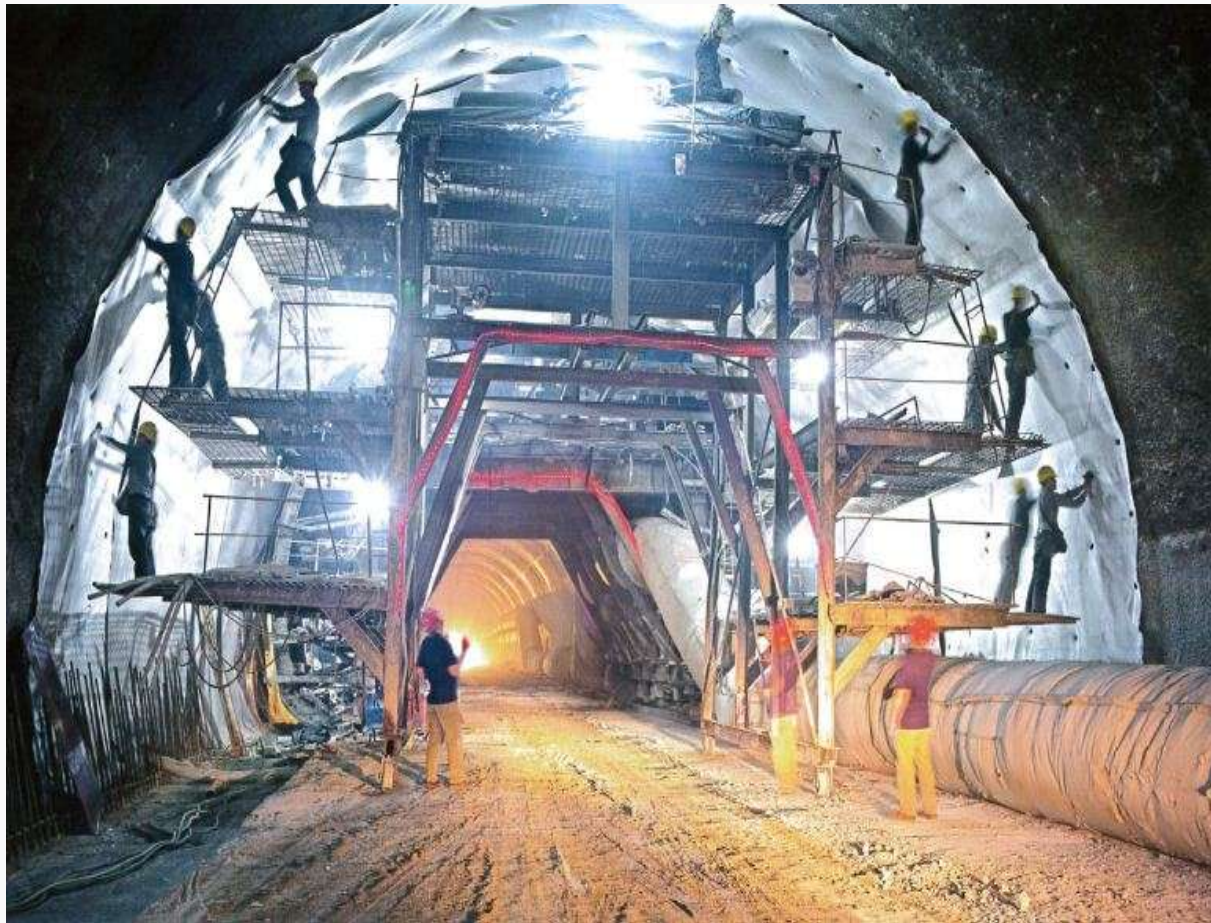


•Yanshan-Pingyuan Expressway/ Yunnan



Tunnel High Way Projects

- Chongqing Liangping - Zhongxian Tunnel Express



- DaNanYa Tunnel Express/ JiangXi



Metro and Railway Projects

- Guiyang – Guangzhou Railway



- Shield tunnel of Tianjin Metro



- Railway bridge of Xian - Chengdu



City Development Projects

•Kunming No.1 waste water recycle / Kunming



•No.5 sewage treatment plant / Kunming



Increase in International Business

Comparison Pie Chart for Domestic and International Business

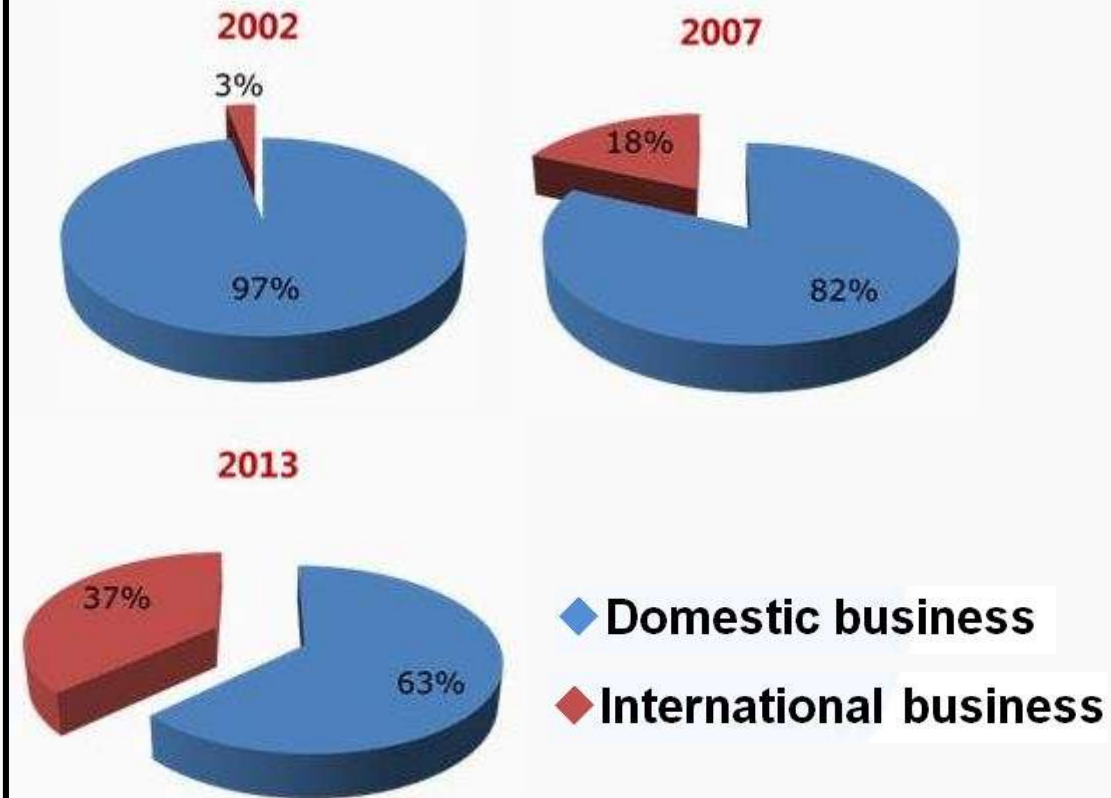
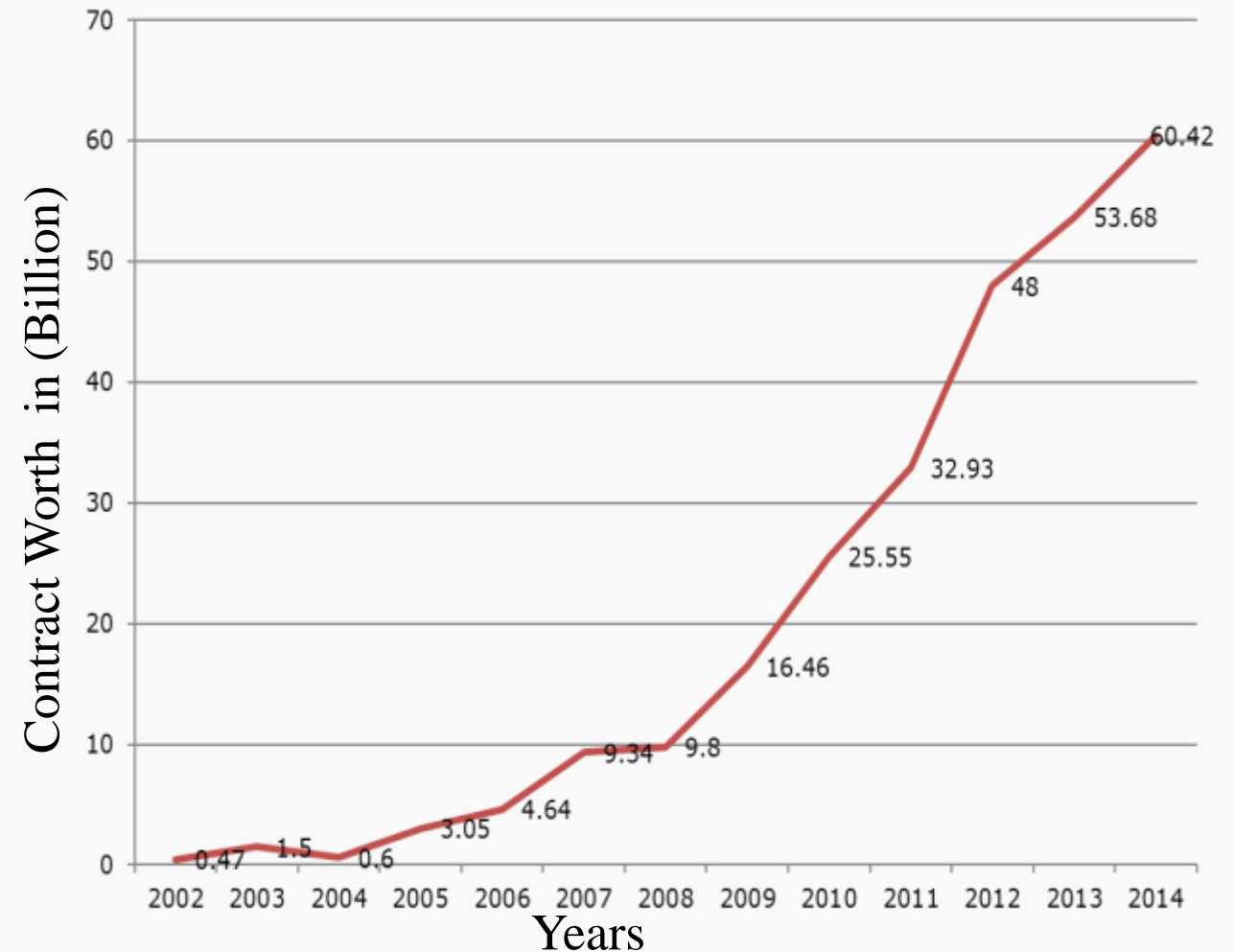


Diagram for increase in international business



Overseas Projects Distribution Map



- 22 Projects Under Construction and Completed
- 24 Projects Under Tracking

Overseas Projects

- Subway Construction / Malaysia



- Lagdo Hydropower Station / Cameroon



- M' Bali Dam / Central Africa





China Railway 20th Bureau Group Co., Ltd.

- Established in 1948
- Formally Known as 10th Division of People's Liberation Army Railway Unit.



1949
5th Brigade of People's
Liberation Army

1952
Chairman Mao issued changed
into agricultural construction

1952
Chairman Mao issued changed
into agricultural construction

1953
Korea War, Division ordered
militarize 10th Division of
Volunteers Railway Engineering

1984
Incorporated into Ministry of
Railway

1999
Decoupled with Ministry of
Railway and Named China
Railway 20th Engineering

2002
Restructured to China Railway
20th Bureau Group Co., Ltd.

Urban Rail Projects

- Constructed more than 10 Cities in China such as Shenzhen, Guangzhou and Shanghai etc.
- Shenyang Metro won Luban Prize (represent advance level of construction quality)



High-Speed Railway Projects

- Qingdao - Ji'nan High Speed Railway



- Shanghai – Kunming High Speed Railway



- Ballast-less truck slab High Speed Railway Line



Tunnel Railway Projects

- Longlinggong Tunnel
(Yichang-Wanzhou)

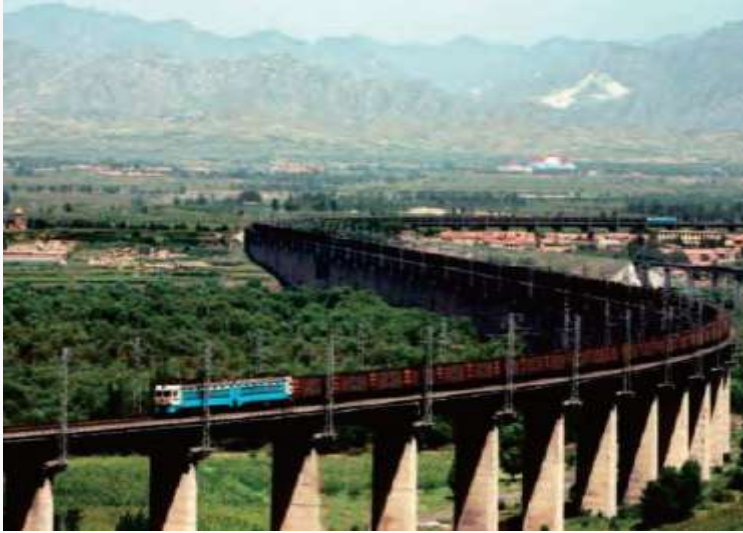


- Desert Railway Tunnel
(Shenmu- Yan an)



Railway Bridge Projects

- Datong – Qinhuangdao Railway



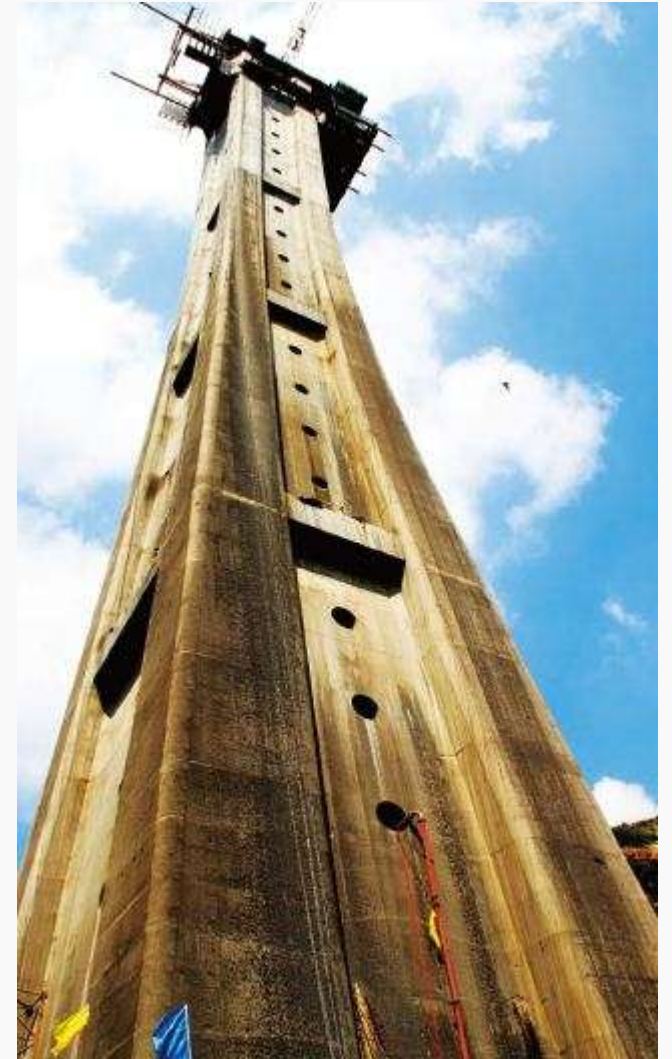
- Xiangfan- Chongqing Railway



- Watang – Rizhao Railway



- Huangling- Hancheng-Houma Railway



Other Housing Projects

- Aviation Technology Building



- Xi' an Rancho Santa Fe Project



- Xi' an University of Technology



- Xi' an Weland Garden Rainbow Town



Oversea Projects - I

- Guma Railway Station (Angola / Africa)



- Lobito – Luau (Angola / Africa)



Oversea Projects - II

- Luau New Airport (Angola / Africa)



Future Missions

- Try to acquire high quality land in real-estate development
- Emphasize research of low cost housing and high quality Condo.
- Seizing business opportunities in development of commerce, logistic industry and infrastructure projects
- In-corporate with Union and Regional government in development of housing, industry zones and other infrastructures (Deep Sea Port, Hydropower, Roads and Bridges)
- In-corporate with local and oversea business partnership in construction sectors.

!THANK YOU!

From

