



SOUTHERN METAL INDUSTRY CO.,LTD
南方金属股份有限公司
www.smigroups.com, zta@smigroups.com



It gives me a great pleasure to welcome you to “Southern Metal Industry Co., Ltd.”

Since its inception in 1996 our group formerly known as Southern Metal Industry (SMI) has been considered the rising name in the steel construction market. Today SMI is skilled in all facets of world-class Pre Engineered Steel Building Solutions, and products like roofing sheets, decking sheets, purlins for the industrial and commercial sectors. I am proud to say that SMI has proven to be one of the most cost-effective, dependable and flexible manufacturers here in Myanmar.

We understand that quality, time and costs are essential components of a project world over and we strive to minimize the cost and time without any compromise on the quality front. Our rapid construction technologies enable our clients to derive benefits, opening an entire new spectrum of competence and efficiency.

Therefore whatever you intend on taking your new building and investment activity in Myanmar, please keep us in mind as we will be there as your respectful innovative partner to ensure prompt implementation of highly efficient quality solutions.

Presently we have an ISO 9001:2008 Certificated high production unit equipped with sophisticated and modern machinery and a team of talented and experienced staffs, engineers, designers and technicians. We always strive to meet our customers’ requirements and specifications. We are able to manufacture and deliver modern steel buildings with high quality products and exceptional services to our strong client base in the market.

With economic liberalization in Myanmar these years, SMI cooperate with foreign partners on Real Estate field, business including High-rise Building, Sky Road and Bridges ...

I sincerely hope to get more chances to develop more business for making our country more and more beautiful & comfortable.

Let’s construct the modern Myanmar together.

Thanks and Best Regards,
Zaw Tun Aung
Managing Director



SOUTHERN METAL INDUSTRY CO.,LTD.
南方金属股份有限公司



SMI is utilizing professional software for design and construction packages i.e. frame analysis software, concrete and steel member design and the tool for standard specifications. Asian Center or Engineering Computations and Software (ACECOMS), Etabs, Staad-Pro, Tekla Structures and latest American Codes. High quality and most competitive price buildings will be delivered in 12 weeks. Proposal drawings included in all our quotations.

Products of Siam Yamato Steel Co., Ltd. (TIS/ISO 9002 certified) are supplied.



Our Services:

- Design, Manufacture and Supply of all kinds Steel Structure Pre- Engineering Buildings
- Production and Installation of Roofing Materials
- Supply and Installation of Floor Decking Forming Sheets
- Box Beam Structure production and installation
- Other civil works as required at steel structure building site



SOUTHERN METAL INDUSTRY CO., LTD.
南方金属股份有限公司



globalgroup[®]
Management System Experts

Certificate of Registration

This is to certify that the

QUALITY MANAGEMENT SYSTEM

of

Southern Metal Industry Co., Ltd.

66-67 Depeyin Wun Htaut U Myei Road, Industrial Zone (4), Hlaing Tharyar Township, Yangon,
MYANMAR

for

**Design, Manufacture and Fabrication of Metal Structures (H & I Beams), Roofing
and C-Channels for Buildings**

has been assessed and registered against the provisions of

ISO 9001:2008

International Standard

With

Registration Number: 56Q17690

Project: 55-17690-1-Q

Certification Date: 19 July 2016

Code: DJ 28.11

Recertification Due Date: 14 September 2018

Exclusions: None

Certification Approved By:

Mahmut Segukpinar

Technical Manager

Registration is subject to the management system being continually maintained to the above standard under regular surveillance. Should surveillance not take place when required, registration shall be removed.

This certificate is the property of Global Group of Companies Limited
21 Lansdowne Crescent, Edinburgh, Midlothian, EH12 5EH, Scotland, United Kingdom



Please validate the authenticity of the certificate at www.globalgroup.net



30001544



SOUTHERN METAL INDUSTRY CO.,LTD.
南方金属股份有限公司





SOUTHERN METAL INDUSTRY CO.,LTD.
南方金属股份有限公司



SMI Advanced Machines

- Diaphragms Assembly Machine
- Box Assembly Machine
- Root Pass Welding Machine
- Box Sub Arc Welding Machine
- Electro-Slag Welding Machine
- Box Drilling Machine
- CNC Plasma Cutting Machine
- CNC Flame Cutting Machine
- Hydraulic Press Cutting Machine
- Miter Band Saw Cutting Machine
- CNC Mini Cutter Machine
- CNC Gantry Type Drilling Machine
- CNC Drilling Machine
- Radial Type Drilling Machine
- H-Beam Assembly Machine
- H-Beam Sub-Arc Welding Machine
- H-Beam Flange Hydraulic Straightening Machine
- CNC 3D Beam Drilling Machine
- Beam Beveling Machine
- Band Saw Cut Off Machine
- CNC Pipe Cutting Machine
- Plate Bending Machine
- H Beam Bending Machine
- Hydraulic Sectors Bending Machine
- Shot Blasting Machine
- Flexible Painting Machine
- Decking Sheet Machine
- Roofing Machine
- Roof Bending Machine
- Roof Sheet Cutting and Folding Machine
- C-Purlin Machine
- Milling Machine



SOUTHERN METAL INDUSTRY CO.,LTD.
南方金属股份有限公司



Advanced Machines



Electro-slag Welding
Machine



Sub-Arc Welding
Machine



Flexible Painting
Machine



Shot Blasting
Machine



Plate Bending
Machine



H-Beam Bending
Machine



SOUTHERN METAL INDUSTRY CO.,LTD.
南方金属股份有限公司



Advanced Machines



CNC Plasma
Cutter



Face End Milling
Machine



Decking Sheet
Machine



CNC Flame
Cutter



CNC Pipe Cutting
Machine



CNC Gantry Type
Drilling Machine



SOUTHERN METAL INDUSTRY CO.,LTD.
南方金属股份有限公司



Advanced Machines



Roofing Machine



H-Beam Assemble
Machine



C-Purlin
Machine



CNC Drilling
Machine



Roof Bending
Machine



Hydraulic Press
Cutting Machine



SOUTHERN METAL INDUSTRY CO.,LTD.
南方金属股份有限公司



Advanced Machines



Roofing Sheet Cutting
and Folding Machine



Hydraulic
Straightening



CNC Mini Cutter



Radial Type Drilling
Machine



Storage Tank Welding
Machine



Ultrasonic Testing



SOUTHERN METAL INDUSTRY CO.,LTD.
南方金属股份有限公司



Advanced Machines



Band Saw Cut off
Machine



Beam Bevelling
Machine



Box Assembly
Machine



CNC 3D Beam Drilling
Machine



SOUTHERN METAL INDUSTRY CO.,LTD.
南方金属股份有限公司



Special Structures





SOUTHERN METAL INDUSTRY CO.,LTD.
南方金属股份有限公司



Production & Assembly





SOUTHERN METAL INDUSTRY CO.,LTD.
南方金属股份有限公司

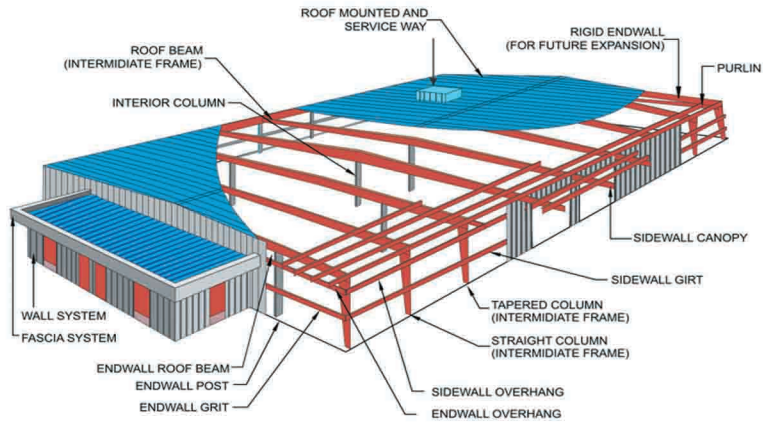


Production & Assembly





SOUTHERN METAL INDUSTRY CO.,LTD.
南方金属股份有限公司

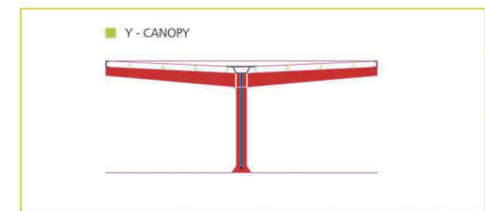
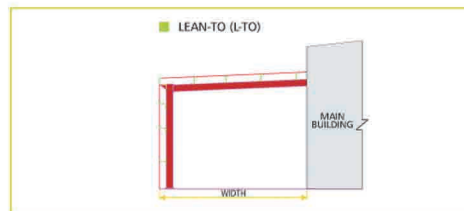
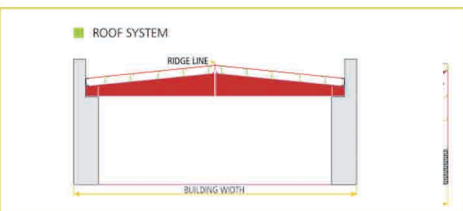
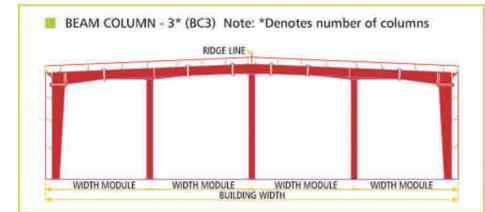
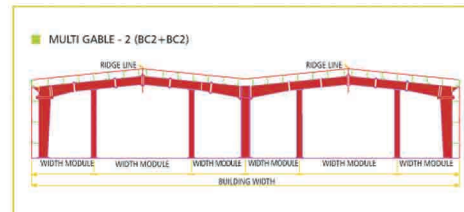
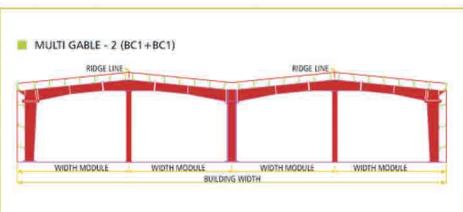
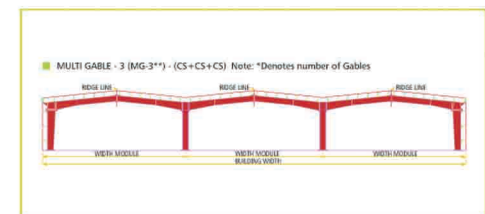
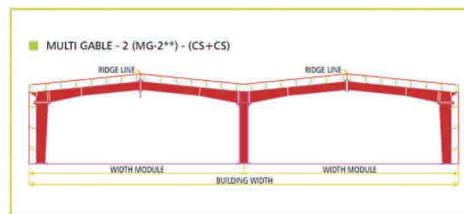
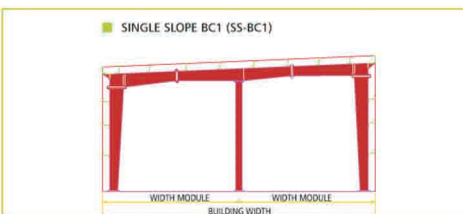
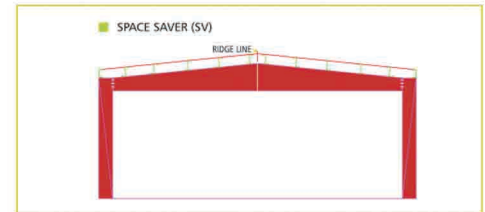
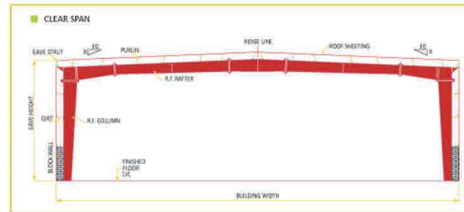


Pre Engineered Building System



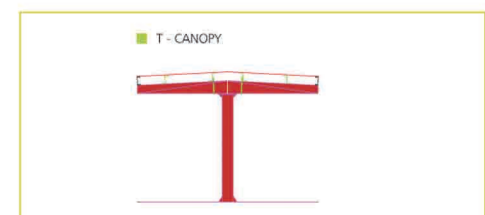
Design - Production - Installation - Customized Manufacturing

Pre-Engineered Building System



Engineering Team

The engineering team is composed of experienced structural engineers having the professional knowledge in design and detailing of steel structures, covering both, structural steel and pre-engineered buildings. Each building is carefully analyzed and designed taking into consideration all the technical information requested by the municipality and consultants related to the project, insuring the safety and stability of the structure.



Applied Codes

SMI applies mainly a list of international and repeated codes for steel design and load application such as Live Loads, Wind Pressure and Seismic Force, taking into consideration the official and authorized codes for the country and the region where the project shall be designed and built.

Minimum Buildings Codes:

- International Building Code, IBC 2006 (ICC)
- American Society of Civil Engineers ASCE7-05
- MNBC, Myanmar National Building Code 2016



SOUTHERN METAL INDUSTRY CO.,LTD.
南方金属股份有限公司

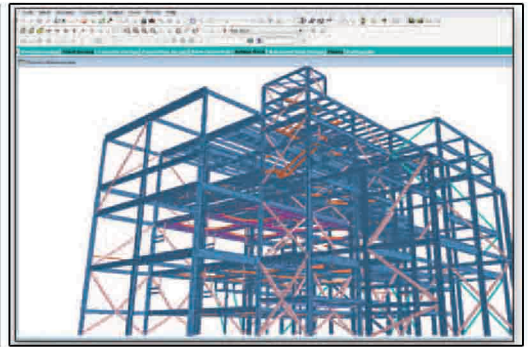
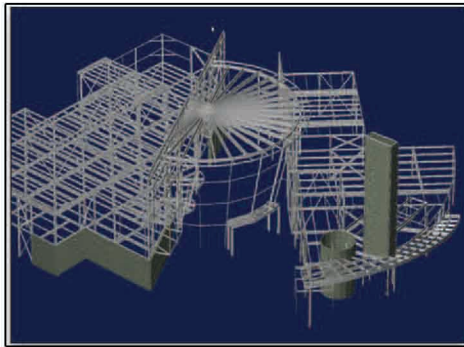
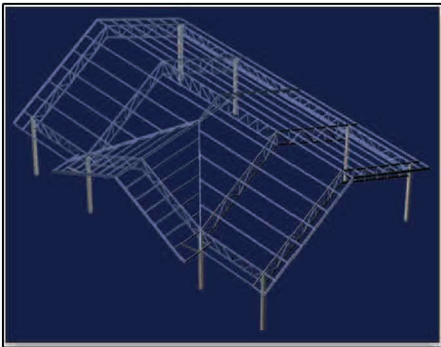


Design Codes:

- American Institute of Steel Construction AISC 2010, 360
- American Iron and Steel Institute, AISI 2007
- British Standard, BS 5950
- Eurocode 3 of steel Structures, EN 1-3, 2006
- American Welding Society, AWS D1.1 2012

Manuals and Design Guides:

- Metal Building Manufacturers Association, MBMA 2006
- AISC, Design Guide 09 Torsional Analysis of Structural Steel Members (Non-Linear Torsion)
- AISC, Design Guide 07 Industrial Buildings Roof to Anchor Rods (Second Edition)



Computer Software

Computer software are professionally used by SMI engineers to perform accurate 3D analysis, design and detailing for each building, meeting the highest standards of the industry in terms of design codes applications, approval drawings and fabrication drawings, reaching an accuracy to the 1 mm.

Design Software

SAP, Staad are professional structural analysis and design software used for Pre-Engineered Buildings and Structural Steel respectively, allowing the engineers to study the building behavior in real 3D model, and checking the internal stresses generated by the applied loads, such as dead, live, cranes...etc, adding to it the forces of nature due to wind, snow and seismic.

Detailing Software

Detailing is fully computerized using professional software such as Tekla Structures and AutoCad to generate the complete 3D modeling from which all shop drawings, BOM and erection drawings are automatically generated and released to the factory for fabrication.

Material Selection

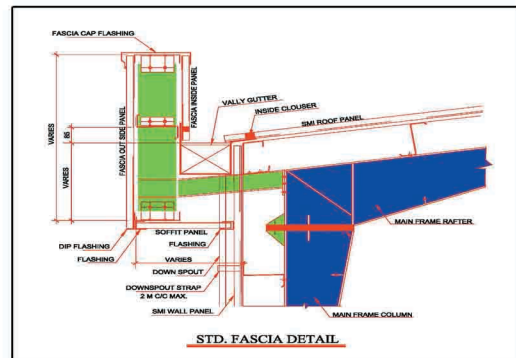
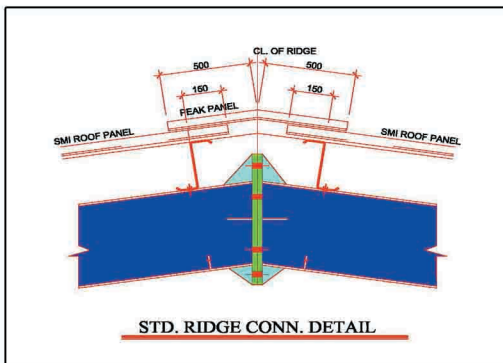
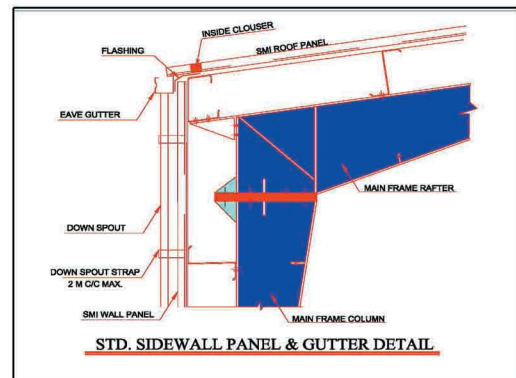
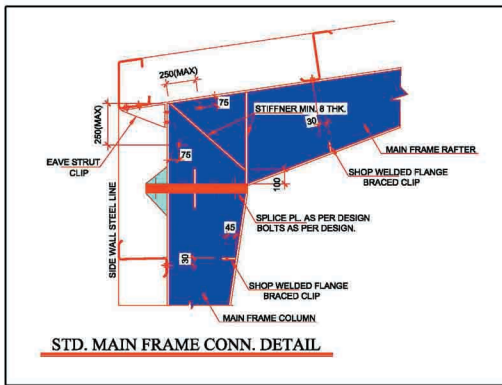
Steel sections are carefully selected in accordance to the ASTM (American Society for Testing and Materials), or equivalent from other known standards, such as JIS, EN...etc. All materials shall satisfy the proper Physical and chemical properties suitable for building fabrication.

The following specifications or equivalent, are most commonly used:

- ASTM A572 Grade 50 (Steel Plates and Hot Rolled Sections...etc)
- ASTM Grade 36 (Anchor Bolts, Rods...etc)

- ASTM A653 G90 (Cold-Formed Z and C sections)
- ASTM A755, ASTM A924 (Sheeting and Deck)
- ASTM A475 (Cables)
- ASTM A325 (Bolts)
- ASTM A563 (Nuts)
- ASTM A436, 8s or 10s (Washers)

Whenever the steel grade is specified by the consultant, SMI insure the proper material purchase in accordance to the highest standards and specifications.



Engineering Output

The Engineering Department produces all required documents for approval, fabrication and erection. Upon customer request, some of the documents are submitted to the client by hard or soft copy.

List of generated documents:

- Design calculations
- Approval drawings
- Anchor bolt plans
- Erection drawings
- Shop details (To SMI plant)
- Bill of materials (BOM)



SOUTHERN METAL INDUSTRY CO.,LTD.
南方金属股份有限公司



Industrial Buildings



Design - Production - Installation - Customized Manufacturing



SOUTHERN METAL INDUSTRY CO.,LTD.
南方金属股份有限公司



Industrial Buildings



Design - Production - Installation - Customized Manufacturing



SOUTHERN METAL INDUSTRY CO.,LTD.
南方金属股份有限公司



Project Achievements



Project - Steel Mill, No. (1) Heavy Industries Enterprise, Ministry of Industry
Location - Pang Pet, Taung Gyi, Shan State.
Project Description - Steel Structure (13,285) Tons Fabrication



Project - Ocean Super Center (CNQC)
Location - Shwe Gone Dine T/S
Project Description - 4-storyed Steel Structure Fabrication & Erection



SOUTHERN METAL INDUSTRY CO.,LTD.
南方金属股份有限公司



Project Achievements



Project - Ta Han Food Industrial Co., Ltd.
Location - East Dagon, Yangon.
Project Description - Yama Noodle Factory



Project - Cement Silo (Max Myanmar Construction Co., Ltd.)
Location - Yaeni, Naypyitaw..
Project Description - Steel Blending Silo 12,000mmØ (Capacity 3,000 Tons)



SOUTHERN METAL INDUSTRY CO.,LTD.
南方金属股份有限公司



Project Achievements



Project - Myanmar Rice Trading Co., Ltd.
Location - Watayar Industrial Zone, Yangon.
Project Description - Plywood & Saw Mill



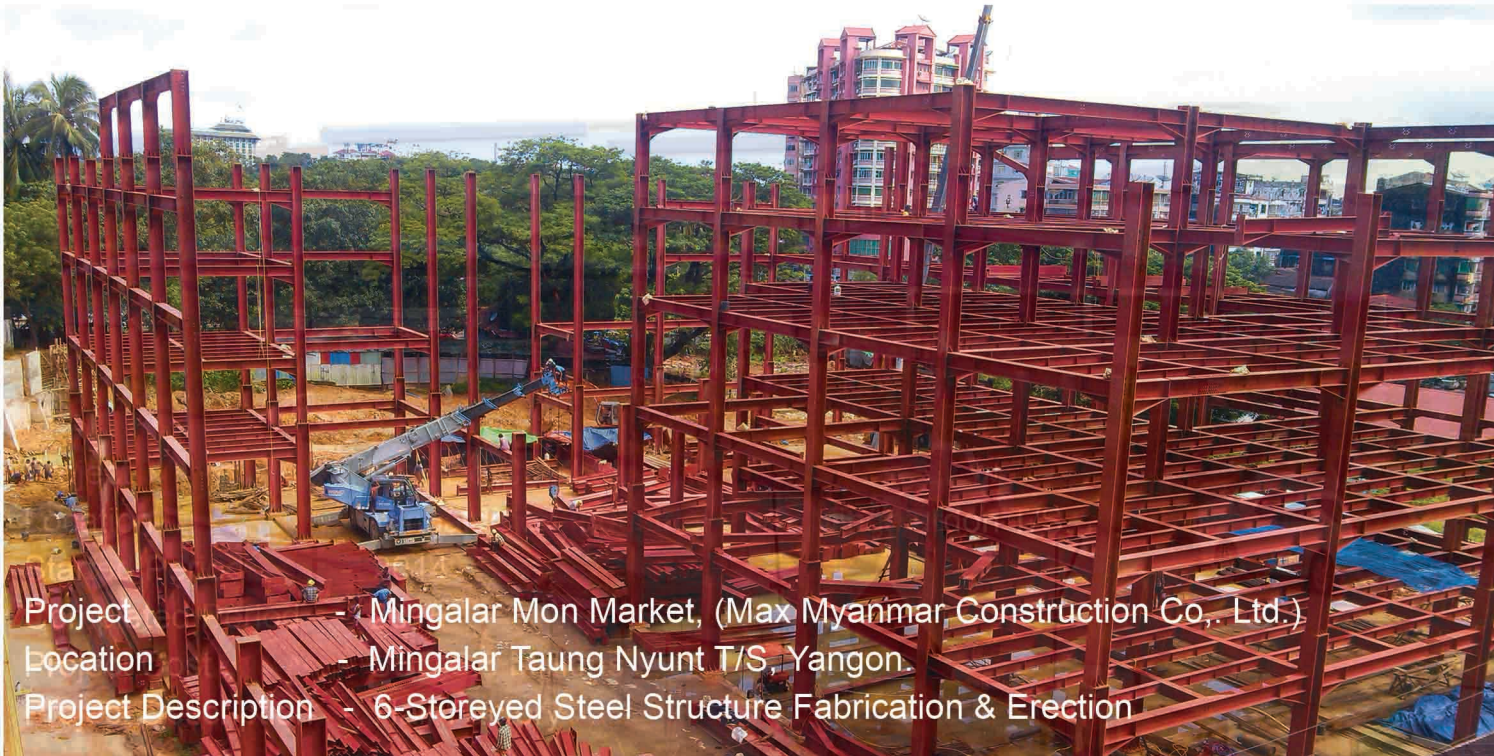
Project - Dong Long (Patheingyi) Garment Co., Ltd.
Location - Patheingyi, Ayeyarwaddy.
Project Description - Garment Factory



SOUTHERN METAL INDUSTRY CO.,LTD.
南方金属股份有限公司



Project Achievements



Project - Mingalar Mon Market, (Max Myanmar Construction Co., Ltd.)
Location - Mingalar Taung Nyunt T/S, Yangon.
Project Description - 6-Storeyed Steel Structure Fabrication & Erection



Project - Hon Chuan Enterprise (Myanmar) Co., Ltd.
Location - Yangon Industrial Zone, Mingalardon T/S.
Project Description - Plastic Packaging Factory



SOUTHERN METAL INDUSTRY CO.,LTD.
南方金属股份有限公司



Project Achievements



Project - Nan Thazin Trading.
Location - Yangon Industrial Zone, Yangon.
Project Description - Warehouse



Project - Aung Tha Pyay Co., Ltd.
Location - Hlaing Tharyar Industrial Zone (5), Yangon.
Project Description - 3-storeyed Steel Structure Fabrication & Erection



SOUTHERN METAL INDUSTRY CO.,LTD.
南方金属股份有限公司



Project Achievements



Project - Hung Kiu (Myanmar) Garment Manufacturing Co., Ltd.
Location - Thanatpin, Bago.
Project Description - Garment Factory



Project - Myanmar Knitting Factory Ltd.
Location - Pathein, Ayeyarwaddy.
Project Description - Garment Factory



SOUTHERN METAL INDUSTRY CO., LTD.
南方金属股份有限公司



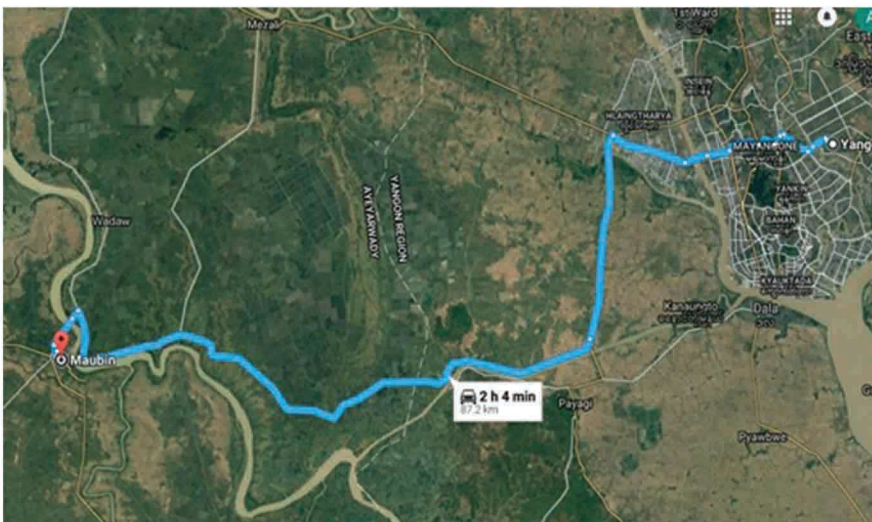
Maubin Industrial Park Project

- Developed by
- Maubin Development Public Co., Ltd
 - Shanghai Yangdon Investment and Development Co., Ltd.
 - Southern Metal Industry Co., Ltd.
- Total Develop Area - 1,500 Acres
- Total Investment - 1 billion USD



Location of Maubin Project

Approximate 87.2 Km West of Yangon City Center
Approximate 100km from Yangon International Harbor





SOUTHERN METAL INDUSTRY CO.,LTD.
南方金属股份有限公司



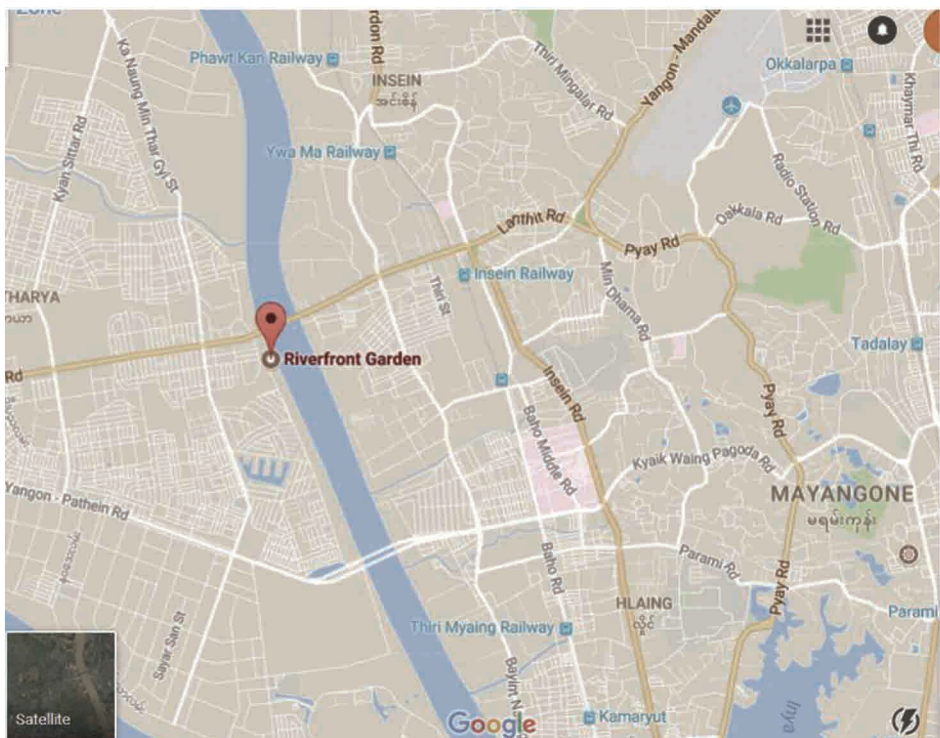
River Front Garden Condominium Project

- Developed by – SMI Real Estate Development Co., Ltd.
- Location – between Aung Zaya and Bayint Naung Bridges
- Project Area – 223,408.36 m²
- Facilities – Cinema, Restaurant, Gym & Entertainment, Shopping Mall



**RIVERFRONT
GARDEN**

YANGON CHIEF
INTERNATIONAL COMMUNITY





SOUTHERN METAL INDUSTRY CO.,LTD.
南方金属股份有限公司



Future Missions

- Try to acquire high quality land in real-estate development.
- Emphasize in research of low cost housing and high quality condominiums.
- Seizing business opportunities in development of commerce, logistic industry and infrastructure projects.
- To be in-corporated with Union and Regional Government in development of housing, industrial zones and other infrastructures (Deep Sea Port, Hydropower, Roads and Bridges).
- To be in-corporated with local and oversea business partnership in all construction development sectors.

Contact Details

Head Office: No. (71/72), Corner of Pyin Si Min Thar Gyi Street and Min Gyi Mahar Min Khaung Street, Industrial Zone (4), Hlaing Tharyar Township, Yangon.
Tel: +95-1-685710, 685711, 685707, 685293, Fax: +95-1-685079

Factory (1): No. (66/67), Depeyin Wun Htuat U Myei Street, Industrial Zone (4), Hlaing Tharyar Township, Yangon.
Tel: +95-1-685308, 685078

Factory (2): No. (73~75), Pyin Si Min Thar Gyi Street, Industrial Zone (4), Hlaing Tharyar Township, Yangon.
Tel: +95-1-685710, 685711, 685707, 685293

Website: www.smigroups.com
Email: zta@smigroups.com, ztaung09@gmail.com, smi@smigroups.com

SOUTHERN METAL INDUSTRY CO.,LTD
南方金属股份有限公司

No. (71/72), Corner of Pyin Si Min Thar Gyi Street & Min Gyi
Mahar Min Khaung Street, Industrial Zone (4), Hlaing Tharyar
Township, Yangon.

Tel:+95-1-685710,685711,685707,685293, Fax:+95-1-685079
Mobile: +95-9-5151885, 402620806, 977844888, 420042543